

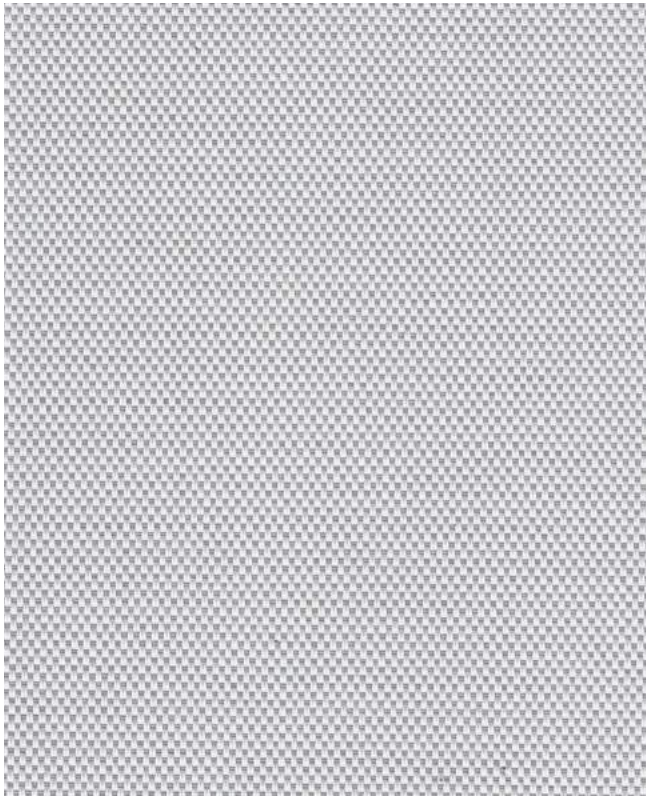
Solar Shade Fabric
Lighting Designer Series
30 DN
30 GDD



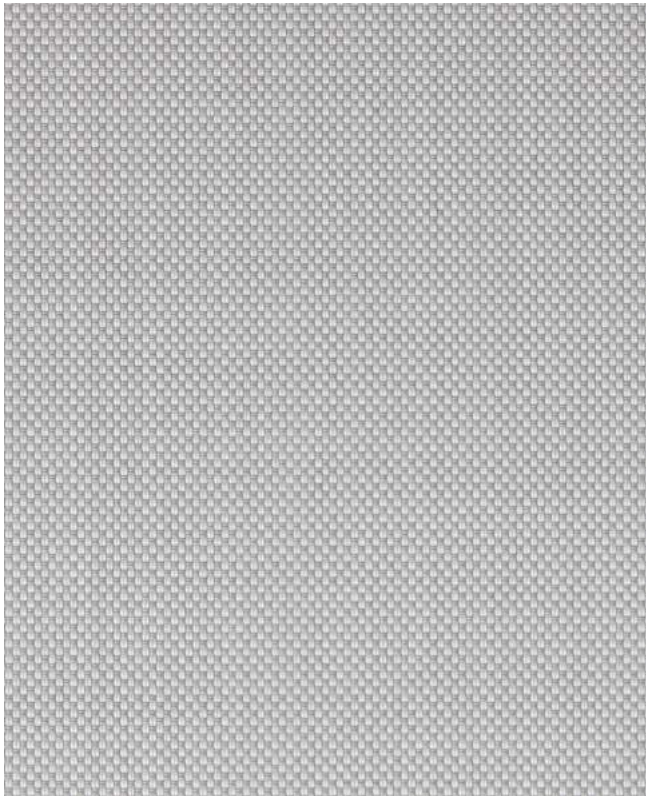
EuroShade

30 DN SERIES

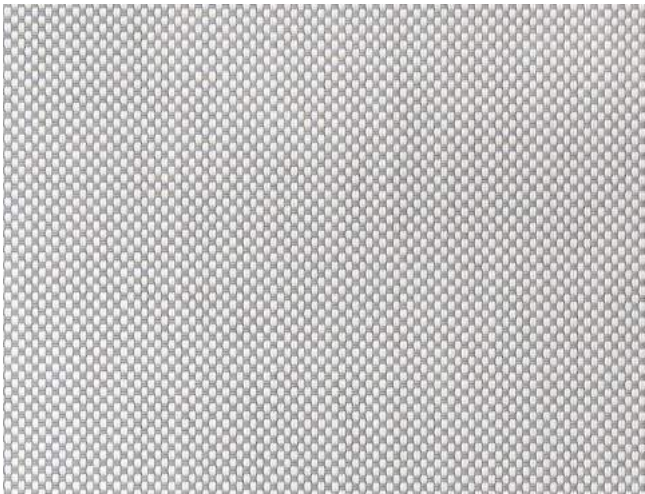
PR/1%/3%/5%/10% OPENNESS



PRIVACY 30 DN 003 WHITE / GREY



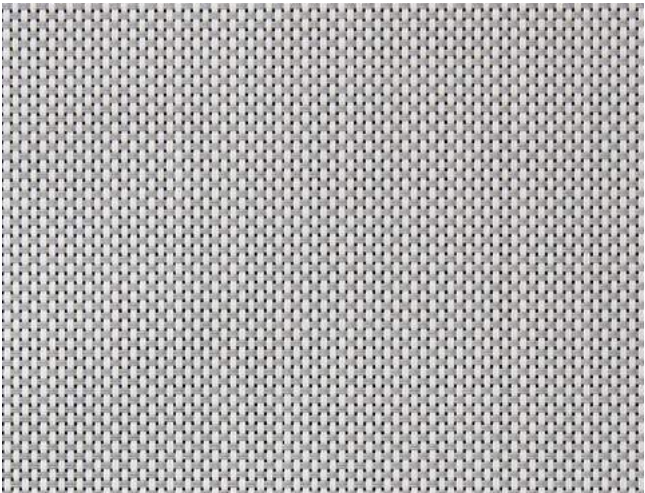
1% 30 DN 003 WHITE / GREY



3% 30 DN 003 WHITE / GREY



5% 30 DN 003 WHITE / GREY



10% 30 DN 003 WHITE / GREY

SPECIFICATION

Composition

24 % Polyester / 76 % PVC

Standard Roll Length

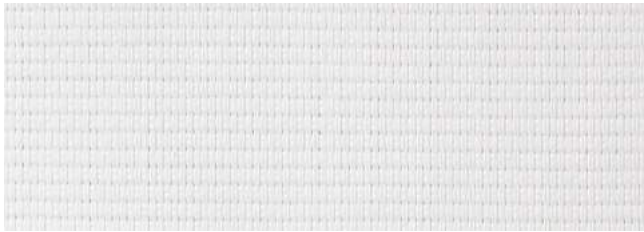
33 lds (30 m)

Width

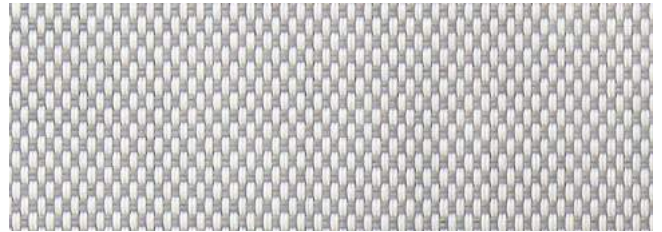
78.7" (2.0m), 98.4" (2.5m),
118" (3.0m)

Openness Factor

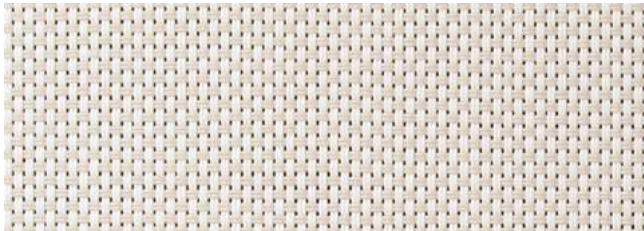
	<0.1%	1%	3%	5%	10%
Weight +/-5%	15.62 oz/yd ² (529 g/m ²)	14.57 oz/yd ² (494 g/m ²)	13.93 oz/yd ² (472 g/m ²)	12.71 oz/yd ² (431 g/m ²)	11.65oz/yd ² (395 g/m ²)
Thickness +/-5%	0.027" (0.69 mm)	0.025" (0.63 mm)	0.024" (0.61 mm)	0.023" (0.60 mm)	0.022" (0.56 mm)
UV Blockage	>99%	99%	97%	95%	90%
Acoustic ASTM C423	NRC 0.05 SAA 0.04	NRC 0.55 SAA 0.56	NRC 0.15 SAA 0.17	NRC 0.10 SAA 0.11	NRC 0.05 SAA 0.06



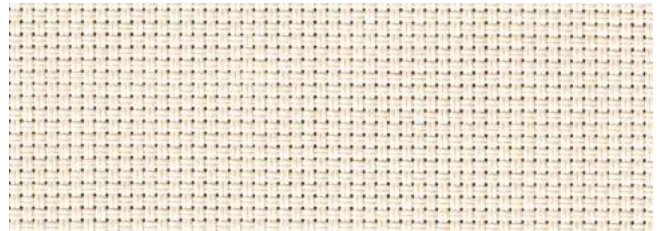
30 DN 001 WHITE/WHITE (PR,1%,3%,5%,10%)



30 DN 003 WHITE/GREY (PR,1%,3%,5%,10%)



30 DN 016 WHITE/LINEN (PR,1%,3%,5%,10%)



30 DN 404 BONE/BONE (1%,3%)



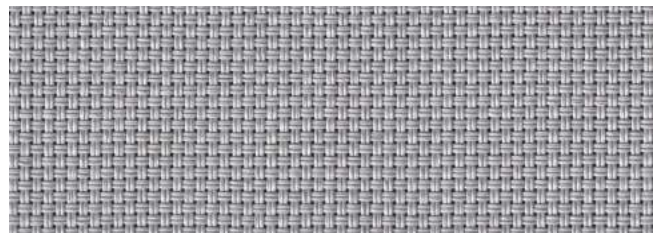
30 DN 914 BLACK/BLACK (1%,3%,5%)



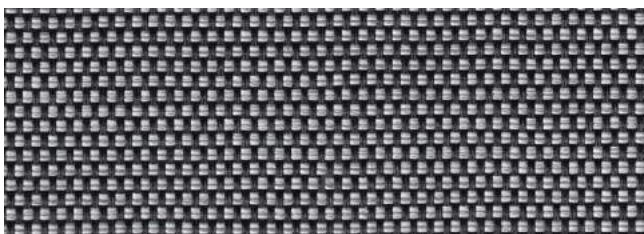
30 DN 1241 CHARCOAL/BRONZE (1%,3%,5%)



30 DN 203 BEIGE/GREY (1%,3%,5%)



30 DN 303 GREY/GREY (1%,3%,5%)



30 DN 903 BLACK/GREY (1%,3%,5%)



30 DN 906 BLACK/DARK GREY (1%,3%,5%)

SPECIFICATION

		TS	RS	AS	TV	SC Single Glass			SC Insulating Glass		
						1/8"CL	1/4"CL	1/4"HA	1/2"CL	1"CL	1"HA
PR	001 White/White	19	72	9	16	0.29	0.30	0.30	0.28	0.29	0.24
	003 White/Grey	9	55	36	5	0.39	0.39	0.35	0.37	0.36	0.28
	016 White/Linen	11	60	29	7	0.37	0.36	0.33	0.35	0.34	0.27
1%	001 White/White	20	70	10	17	0.31	0.32	0.31	0.29	0.30	0.24
	003 White/Grey	10	52	38	6	0.42	0.41	0.36	0.40	0.38	0.29
	016 White/Linen	14	60	26	9	0.37	0.37	0.34	0.35	0.35	0.27
	203 Beige/Grey	10	41	49	6	0.50	0.48	0.39	0.47	0.44	0.32
	303 Grey/Grey	5	32	63	3	0.55	0.53	0.42	0.52	0.49	0.35
	404 Bone/Bone	12	55	33	6	0.40	0.40	0.35	0.38	0.37	0.28
	903 Black/Grey	2	15	83	2	0.66	0.62	0.47	0.62	0.57	0.39
	906 Black/Dark Grey	1	11	88	2	0.68	0.65	0.48	0.65	0.59	0.40
	914 Black/Black	1	4	95	2	0.73	0.69	0.50	0.69	0.62	0.42
	1241 Charcoal/Bronze	2	8	90	2	0.71	0.67	0.49	0.67	0.60	0.41
3%	001 White/White	23	68	9	20	0.34	0.34	0.32	0.31	0.32	0.25
	003 White/Grey	12	49	39	9	0.44	0.43	0.37	0.42	0.40	0.30
	016 White/Linen	17	57	26	13	0.40	0.40	0.35	0.38	0.37	0.28
	203 Beige/Grey	13	39	48	9	0.52	0.50	0.40	0.49	0.46	0.33
	303 Grey/Grey	7	33	60	4	0.55	0.52	0.42	0.52	0.48	0.35
	404 Bone/Bone	14	54	32	8	0.41	0.41	0.36	0.39	0.38	0.29
	903 Black/Grey	5	18	78	4	0.65	0.61	0.47	0.61	0.56	0.39
	906 Black/Dark Grey	4	12	84	5	0.68	0.65	0.48	0.65	0.59	0.40
	914 Black/Black	3	4	93	5	0.73	0.69	0.51	0.69	0.63	0.43
	1241 Charcoal/Bronze	5	9	86	7	0.70	0.67	0.49	0.67	0.63	0.43
5%	001 White/White	25	65	9	22	0.36	0.36	0.33	0.33	0.33	0.26
	003 White/Grey	14	49	37	11	0.45	0.44	0.37	0.42	0.41	0.30
	016 White/Linen	19	57	24	15	0.41	0.40	0.35	0.38	0.37	0.28
	203 Beige/Grey	15	40	45	11	0.52	0.50	0.41	0.49	0.46	0.33
	303 Grey/Grey	11	32	57	8	0.57	0.54	0.43	0.53	0.49	0.35
	903 Black/Grey	6	17	77	5	0.65	0.62	0.47	0.61	0.56	0.39
	906 Black/Dark Grey	5	11	84	5	0.70	0.66	0.49	0.65	0.59	0.41
	914 Black/Black	5	4	91	8	0.74	0.70	0.51	0.70	0.63	0.43
	1241 Charcoal/Bronze	7	8	85	10	0.71	0.68	0.50	0.68	0.61	0.42
	10%	001 White/White	29	63	8	26	0.39	0.38	0.35	0.36	0.35
003 White/Grey		18	42	40	19	0.51	0.49	0.40	0.48	0.45	0.33
016 White/Linen		22	55	23	17	0.43	0.42	0.36	0.40	0.39	0.29

TS = Solar Transmittance
RS = Solar Reflectance

AS = Solar Absorptance
TV = Visual Transmittance

1/8" CL = 1/8" Clear Glass
1/4" CL = 1/4" Clear Glass

1/4" HA = 1/4" Heat Absorbing Glass

Fire Classifications

CALIFORNIA U.S. TITLE 19
CAN/ULC-S109-14 SMALL FLAME TEST
NFPA701-2019 TM#1
BS 5867:2008 PART 2: TYPE B

Anti-Microbial

Bacterial Resistance: ASTM E2180
Fungal Resistance: ASTM G21, AATCC 30 PART 3

Color Fastness to Light

8 Grade (Xenon-Arc-Lamp, Blue Scale)

Acoustical Performance

ASTM C423

Environmental

GreenGuard, GreenGuard Gold, RoHS-Lead Free, REACH

Fabrication Methods

Cutting: Cold, Ultrasonic, Crush or Laser Cut
Welding: Thermal, High-Frequency, or sewing

Care & Cleaning

Dust removal with vacuum, compressed air or soft brushing.
Do not scrub. Wipe clean with sponge using clean water.



• ENERGY SAVING • • PRINTABLE • • FIRE RETARDANT • • ANTI-FUNGAL • • ANTI-BACTERIAL • • LEAD FREE • • NOISE REDUCTION •



EuroShade

